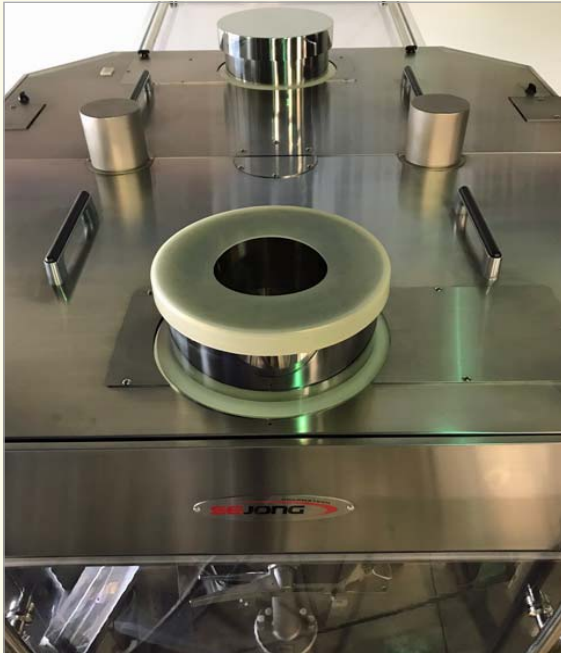


Key Silicone Kap

Dust-Free Transfer of Powder to Tablet Presses and Capsule Fillers



The **Key Silicone Kap** creates a tight connection that prevents clouds of dust during the discharge of bulk materials into feed hoppers on tablet presses, capsule fillers and many other types of processing equipment.

The Key Silicone Kap is manually installed and doesn't need to be clamped on or connected via the use of tools. The cap adheres perfectly to the profile of a special ferrule, creating a tight connection. Customers can cut a hole in the center to fit the desired diameter of the powder discharge chute.

FEATURES:

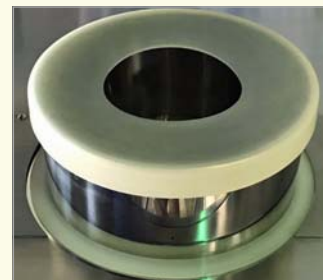
- Improves product flow and controls dust
- Prevents cross-contamination
- Manually installed; no clamp, no tools required
- Easy to detach and thoroughly clean
- Hole can be cut to desired diameter to fit powder discharge chute
- Manufactured according to cGMP and RDA 177.2600 requirements

AVAILABLE SIZES:

- **10" (250mm)** - Part #SILCAP-10.0
- **12" (315mm)** - Part # SILCAP-12.4
- **14" (375mm)** - Part # SILCAP-14.7
- **16" (400mm)** - Part # SILCAP-16.0

MATERIALS:

- Translucent Silicone
- EPDM
- Conductive EPDM



**Key Silicone Kap Connected To A
Sejong Tablet Press Feed Hopper**

LOOK TO KEY INTERNATIONAL FOR:

PROCESSING EQUIPMENT: Capsule Checkweighers - Capsule Fillers - Capsule Polishers - High Shear Mixers & Granulators - Homogenizers - Metal Detectors - Rotary Tablet Presses - Tablet & Capsule Inspection - Tablet Coaters - Tablet Dedusters - Tablet Friability Testers - Tablet Hardness Testers - CORA Butterfly Valves
PACKAGING EQUIPMENT: Blister Packaging - Bottle Cappers - Bottle Fillers - Bottle Inserters - Bottle Unscramblers - Cartoners - Form/Fill/Seal Pouch Fillers - Single Dose Pre-formed Plastic Shells - Stick Pack Packaging - Suppository Systems - Tablet & Capsule Counters - Tube Fillers - Key-Lon & Key-Lube

5/2017