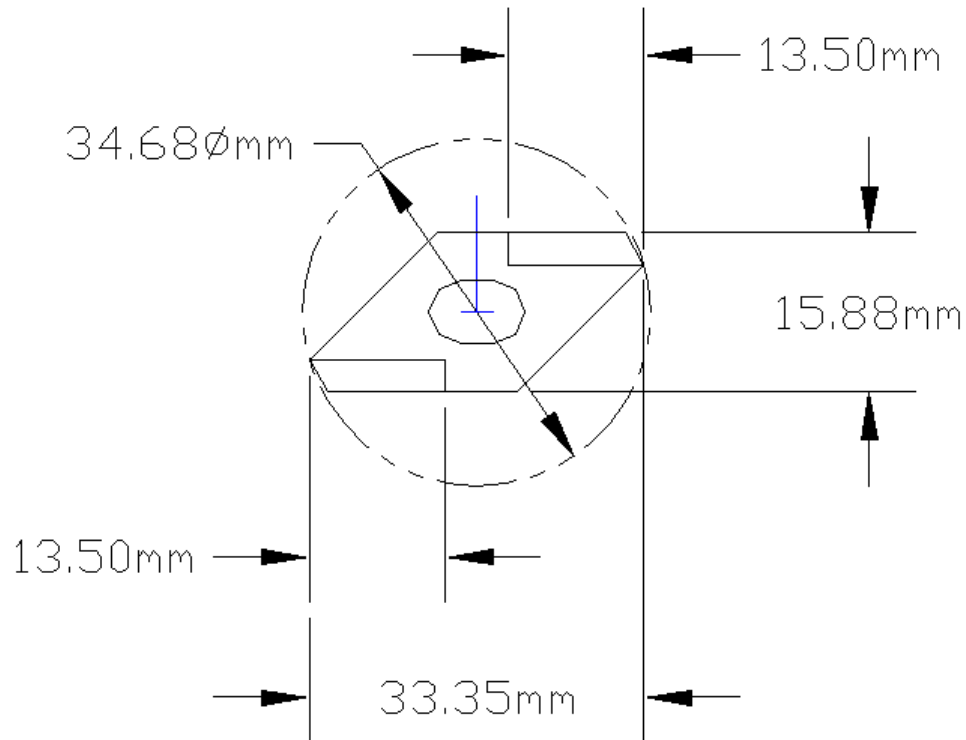


## KG5 CHOPPER BLADE "TIP-SPEED"

CIRCUMFERENCE = 34.68mm X 3.1416 = 108.95mm

TIP-SPEED = 108.95mm PER REVOLUTION OR **0.109 METERS PER REVOLUTION**



THE MAXIMUM TIP-SPEED BASED ON MAXIMUM SPEED OF THE  
CHOPPER BEING 10,000 R.P.M. =  
10,000 R.P.M. / 60 SEC. = 166.66 R.P.S. X 0.109 = 18.16 M/SEC.