

# Laboratory homogenising mixer

for product and process development,  
clinical samples, production of pilot scale batches

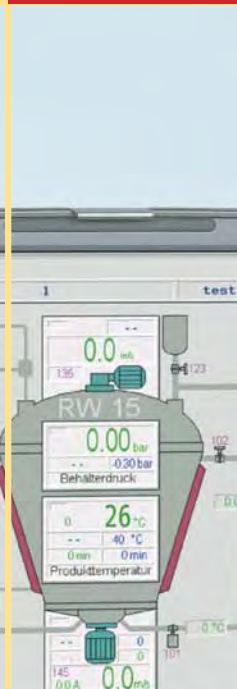
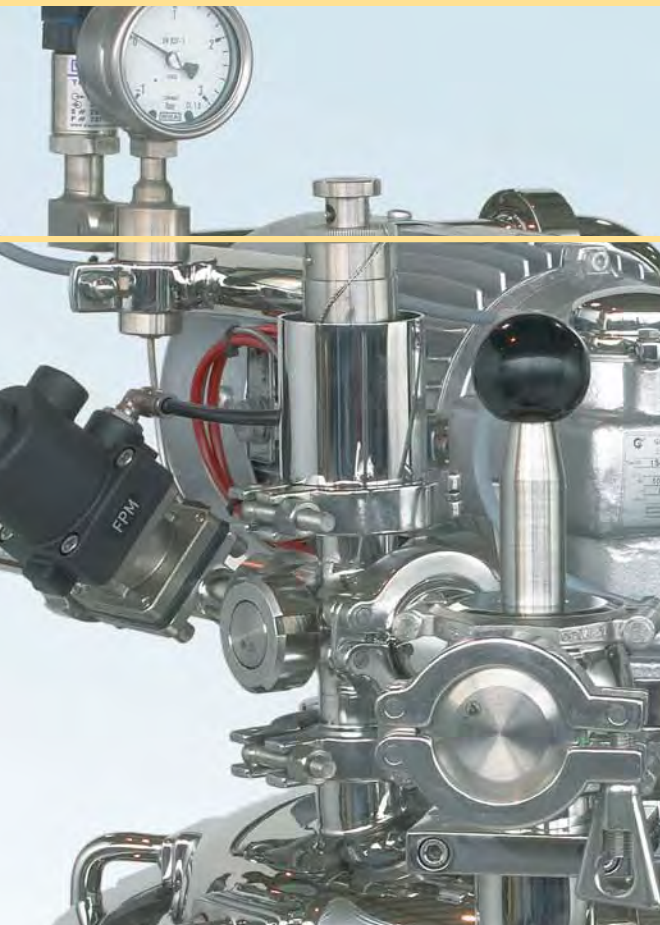
## BECOMIX

### Mischtechnik

**RW 2,5 CD**  
(Becolab Mini)

**RW 15 CD**

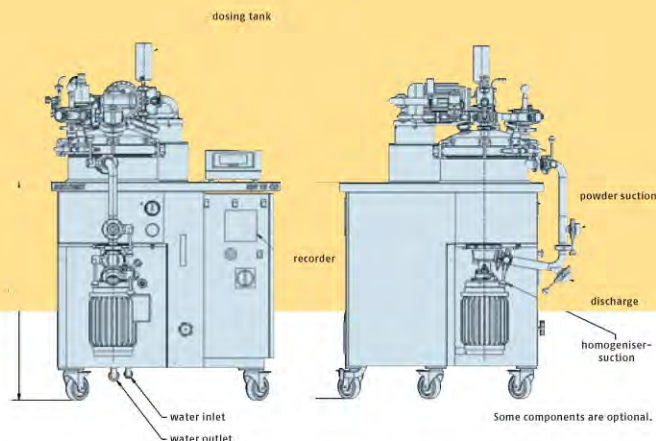
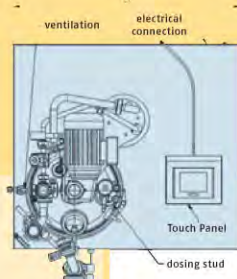
**RW 30 CD**





# Laboratory homogenising mixer

for product  
and process development,  
clinical samples,  
production of  
pilot scale batches



## TECHNICAL DATA

	BECO MINI RW 2,5 CD	RW 15 CD	RW 30 CD
capacity	0,5–3,5 l	2–12 l	2–25 l
working pressure of vessel			
mixing vessel	-1...+1 bar (+2 as option)	-1...+1 bar (+2 as option)	-1...+1 bar (+2 as option)
double jacket	+4 bar	+4 bar	+4 bar
agitator	stepless speed control		
homogeniser	stepless speed control		
electrical connection			
standard	7 kW	10 kW	15 kW
special design	–	12 kW	17 kW
operation	Touch panel with on-line process data recording Laptop/PC as option		
external connections			
cooling water	DN 15	DN 15	DN 15
waste water	DN 25	DN 20	DN 20
dimensions			
A (depth)	800 mm	860 mm	875 mm
B (width)	800 mm	950 mm	950 mm
C (height)	900 mm	900 mm	900 mm

Subject to change without notice

USA Distributor:



4 Corporate Drive  
Cranbury, NJ 08512

P: 609-619-3685  
F: 609-619-3686  
sales@keyinternational.com  
www.keyinternational.com

## OPTIMUM MIXING EFFECT

- ▶ Intensive mixing without dead zones by means of anchor agitator, change in direction of rotation and wall scrapers operating in both directions
- ▶ Patented rotor-stator-execution with shear intensive homogenising function (right) or lower shearing effect combined with a high throughput in "pumping" function (left)
- ▶ Homogenising inside the mixing vessel or by re-circulation for higher viscous products
- ▶ Hot/Cold production by means of suction connection below the rotor
- ▶ Precise temperature control by means of closed pressurised water electrical heating system
- ▶ Reproducible cooling by controlling the flow of the cooling water

## CONTROL SYSTEM/OPERATION

- ▶ Electronic data input by means of touch panel
- ▶ Control of the functions by means of PLC
- ▶ Stepless speed control of agitator drive and homogeniser drive as well as preselection of operating times
- ▶ As option: automatic PC operation with on-line batch documentation
- ▶ As option: ph value and conductivity measurement

## SOLID AND PROVEN ENGINEERING

- ▶ Pressure and vacuum tight mixing vessel in conical execution
- ▶ Illuminated sight glass with wiper
- ▶ Multiple electrical safety circuits to prevent lid dropping
- ▶ Easy to clean interior and exterior
- ▶ Compact installation with heating/cooling system, vacuum unit, PLC control system etc., everything integrated into a mobile laboratory table, so that the machine can be used at different working places
- ▶ The following connections are required only: Electricity (plug), water inlet and outlet to drain



A. Berents GmbH & Co. KG  
Henleinstraße 19-21, D-28816 Stuhr  
TELEFON: +49 (0) 421/8 7111-0  
FAX: +49 (0) 421/8 7111-11  
E-MAIL: mail@becomix.de

**BECOMIX**  
Mischtechnik

*Intelligent and efficient*