

# KEY ROLLER TABLET & CAPSULE INSPECTION MACHINE MODEL K-1000

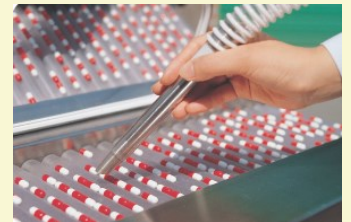
*FOR VISUAL DETECTION OF DEFECTIVE PRODUCT*



The Key K-1000 Roller-TC Inspection Machine is an efficient, reliable, low cost method for manually identifying and removing defective products. This includes broken, chipped, off-color, contaminated or foreign tablets and/or capsules. It combines conveying and roller action to effectively display both sides of the product. The K-1000 represents a significant improvement over the standard flat bed conveyors.



*"FLIP-OVER" ACTION  
ENHANCES DETECTION*



*FLEXIBLE VACUUM WAND*

## **"FLIP-OVER" ACTION ENHANCES DETECTION**

As the conveying action moves product forward, the roller action flips product continually back and forth within the work area. Adjusting roller speed increases or decreases "flipping" frequency to fit operator requirements.

## **FLEXIBLE VACUUM WAND**

The flexible, hand held vacuum wand makes removal of defective product a simple, fast, precise operation even when the conveyor is heavily covered and moving quickly. It also eliminates the possibility of contamination due to human contact.

# KEY ROLLER TABLET & CAPSULE INSPECTION MACHINE MODEL K-1000

## FOR VISUAL DETECTION OF DEFECTIVE PRODUCT

### FEATURES

- “Knob” disassembly/assembly without tools
- Functional 24” work surface
- Stainless steel frame
- Stainless steel bulk product hopper with Lexan viewing panel
- Vibratory product feeder with dust extraction nozzle
- Ribbed Lexan rollers for efficient product movement
- Removable rollers for easy cleaning
- Conveyor and roller speed controls
- Height adjustable work surface (30”-36”)
- Adjustable overhead lighting
- Non-marking, swivel locking casters for mobility
- Rear of conveyor inspection mirror
- Integrated “reject product” collection receptacle

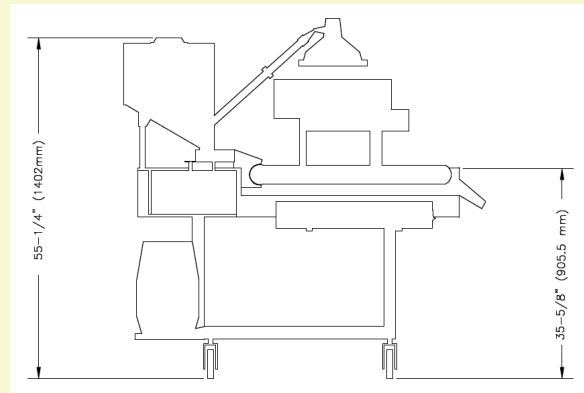
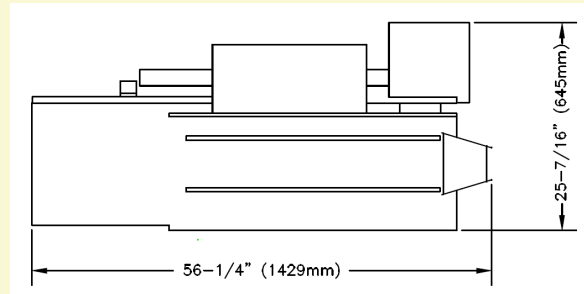
### OPTIONS

- Under roller lighting system
- Tygon and ribbed stainless steel rollers
- Vacuum dust collection unit
- Replacement parts (for two year operation)

### TECHNICAL SERVICE

A Key International technical engineering staff is available for on-site servicing when required. Unit can also be returned to Cranbury, New Jersey factory for prompt service.

### DIMENSIONS



**Electrical Requirements:** 110/60/1

**Shipping Weight:** 500 lbs.

### ONE YEAR WARRANTY

The K-1000 Roller-TC Inspector is guaranteed against defects in workmanship and materials for one year from the date of shipment.

#### **LOOK TO KEY INTERNATIONAL FOR:**

**PROCESSING EQUIPMENT:** Capsule Checkweighers - Capsule Fillers - Capsule Polishers - High Shear Mixers & Granulators - Homogenizers - Metal Detectors - Rotary Tablet Presses - Tablet & Capsule Inspection - Tablet Coaters - Tablet Dedusters - Tablet Friability Testers - Tablet Hardness Testers - CORA Butterfly Valves

**PACKAGING EQUIPMENT:** Blister Packaging - Bottle Cappers - Bottle Fillers - Bottle Inserters - Bottle Unscramblers - Cartoners - Form/Fill/Seal Pouch Fillers - Single Dose Pre-formed Plastic Shells - Stick Pack Packaging - Suppository Systems - Tablet & Capsule Counters - Tube Fillers - Key-Lon & Key-Lube

8/2015